



July / August 2024



# WESTOVER PLACE



PUBLISHED BI-MONTHLY BY NEIGHBORHOOD NEWS, INC FOR WESTOVER PLACE HOMEOWNERS ASSOCIATION INC.

## HOA Contact Corner

### Board Members

Sharon Michael-Chadwell  
Dan Graham  
Joe Leishman

### Neighborhood SAFFE Unit

For questions on city code ordinances and violations.  
Contact Officer Michael Kilmer:  
210-207-0810  
between 9 am – 4:30pm

### Spectrum Contact

Samantha Vargas  
Community Manager  
[svargas@spectrumam.com](mailto:svargas@spectrumam.com)  
210-494-0659

\*Please contact me with any specific account or HOA questions. General resources are listed below.

### Homeowner Support Services

The following services are provided online through the Homeowner Portal at:

[Spectrum.cincwebaxis.com](http://Spectrum.cincwebaxis.com)

- Manage account settings & payments
- Locate HOA documents
- View violations
- Submit Improvement Requests

### Spectrum AM website

These additional services can be located at:  
[Spectrumam.com](http://Spectrumam.com)

- Submit a Hardship request.
  - Please reach out before you know you will have difficulty paying your HOA assessments.
- Request a Payment Plan
- Report violations in the community
- Online chat features
- Shortcuts can be found here to the Homeowner Portal as well.



## Itch, Ouch, Scratch, It's Bug Season!



Whether you're attacked while working in the garden, enjoying a picnic in the park or lounging by the pool, bug bites and stings are an inevitable summer annoyance. At best, bites and stings can be uncomfortable for a few days; at worst, they can be a serious, life-threatening hazard.

Here are some tips on how to relieve the itch or sting and when to know if you should seek medical attention:

If the bite or sting is mildly painful or itchy, apply over-the-counter medication that contains Benadryl or cortisone for topical relief. Other home remedies, like applying a paste made from baking soda and water, dabbing on ammonia with a cotton ball, soaking in oatmeal baths or even applying toothpaste to the site may also provide relief.

Whatever you do, don't scratch. This can cause an infection and leave a scar. And it won't relieve the itch or sting.

If you feel faint, nauseous, dizzy or disoriented, or if you experience rapid heartbeat, difficulty breathing or your lips, tongue or throat swell, call 911 immediately. These symptoms indicate a severe allergy to the insect's venom. Administer an Epi-pen (injectable epinephrine) if one is available and administer CPR if symptoms worsen before emergency personnel arrive. After the episode, follow up with a physician who can determine an allergy prevention treatment.

Stay alert for delayed symptoms around the bite or sting, like redness or swelling, which could indicate an infection or other condition. And see a doctor right away if you have a headache, fever or joint pain within a few days of being bitten. Some insects, like ticks and mosquitoes, can infect their victims with serious, flu-like illnesses, such as Rocky Mountain spotted fever, Lyme disease and West Nile virus, which only a physician can diagnose and treat.

Most important, use insect repellent when outdoors and wear light-weight, light-colored clothing over arms, legs and feet to keep insects off your skin. And avoid wearing perfume and fragrances, which can attract bugs.



## Community Input

If you are interested in contributing articles or have a story that you would like to share in the Westover Place Newsletter, please email them to [Amy@neighborhoodnews.com](mailto:Amy@neighborhoodnews.com). Pat someone's back! Share an interesting tidbit or funny story! Remember, this is your newsletter and sharing things from your neighborhood connects neighbors and makes Westover Place a great place to live! Contributions can be submitted at any time to go into the next publication of your neighborhood newsletter.





By Comptroller.texas.gov

## The 2024 Texas Tax-Free Weekend

**Friday, August 9 through Sunday, August 11.** During this period, you can save on sales taxes when purchasing most clothing, footwear, school supplies, and backpacks (priced under \$100). Whether you shop in-store or online, these qualifying items are eligible for the tax exemption. Remember that the exemption applies only to purchases made during the tax-free weekend, so plan accordingly!

### Qualifying Items

- List of Clothing, Footwear and Other Items
- List of School Supplies
- Clothing and Footwear
- Face Masks
- Backpacks
- School Supplies

### Online Purchases and Telephone Orders

During the holiday you can buy qualifying items in-store, online, by telephone, mail, custom order, or any other means. The sale of the item must take place during the specific period. The purchase date is easy to determine when the purchase is made in-store but becomes more complicated with remote purchases. The purchaser must have given the consideration for the item during the period even if the item may not be delivered until after the period is over.

For example, if a purchaser enters their credit card information in an online shopping website on Sunday Aug.

11, 2024 at 5:00 p.m. to purchase qualifying school supplies, but the school supplies will not be shipped until Friday Aug. 16, 2024 and will not arrive until Tuesday Aug. 20, the purchase will still qualify for the exemption. However, if the charge to your credit card is declined by the payment processor at 11:00 p.m. on Sunday Aug. 11, 2024 and the purchaser does not resubmit payment until Monday Aug. 12, the purchase is taxable.

### Additional Charges Affect the Sales Price

Delivery, shipping, handling and transportation charges by the seller are part of the item's sales price.

Since clothing, backpacks and school supplies have to be less than \$100 to qualify, you have to look at the item's total sales price to determine if you can buy it tax free.

*For example, you buy a pair of jeans for \$95 with a \$10 delivery charge for a total price of \$105. Because the jeans' total price is more than \$100, tax is due on the entire \$105 price.*

If a delivery charge is billed per item, and an invoice has both exempt and taxable items, only the qualifying exempt item's delivery charge is exempt.

If the delivery charge is a flat rate per package, and the amount charged is the same regardless of how many items are included in the package, the total charge can be attributed to any one of the items in the package.

### Items That Do Not Qualify

- The following items do not qualify for exemption during the sales tax holiday:
- items sold for \$100 or more
- clothing subscription boxes
- specially-designed athletic activity or protective-use clothing or footwear
- For example, golf cleats and football pads are usually worn only when people play golf or football, so they do not qualify for the exemption.
- Tennis shoes, jogging suits and swimsuits, however, can be worn for other than athletic activity and qualify for the exemption.
- clothing or footwear rentals, alterations (including embroidery) and cleaning services
- items used to make or repair clothing, such as fabric, thread, yarn, buttons, snaps, hooks and zippers
- jewelry, handbags, purses, briefcases, luggage, umbrellas, wallets, watches and other accessories
- computers
- software
- textbooks
- certain baggage items: framed backpacks, luggage, briefcases, athletic, duffle or gym bags, computer bags, purses
- unspecified school supplies see list



### Have a small business? Let your neighbors know!

**Place your ad here, in YOUR neighborhood newsletter!**

*Realtors \* Help Wanted \* Congratulations \* Home & Lawn Services*

<b>Sixteenth of a page</b> ... (1.75 x 2.5).....	17.50
<b>Eighth of a page</b> ... (3.5 x 2.5).....	23.25
<b>Quarter Page</b> .... (3.5 x 5).....	37.65
<b>Half Page</b> ... (7 x 5).....	58.50
<b>Full Page</b> .... (7 x 10.5).....	78.95

- We can design your ad, no extra charge.
- Discount for long term contract. **RESIDENT ONLY RATES**

**Contact sales@NeighborhoodNews.com or call (210) 558-3160**



### SAN ANTONIO WATER SYSTEM NEWS (SAWS):

Several neighbors have noticed SAWS trucks driving the neighborhood quite frequently, including on back to back days, looking for residents who are not abiding by Stage 3 Watering rules.

Speaking of rules, as San Antonio is entering its fifth year in drought conditions, SAWS is looking to enact five new rules that could take effect as early as mid-July, pending City Council approval. The info and the chart below are taken from the following site: <https://www.saws.org/proposed-drought-rule-changes-top-5-things-you-need-to-know/>

1. SAWS Watering Hours: Proposed changes allow more time early in the morning and also shift the evening watering period past peak power demand.
2. Non-Compliance Charges: Instead of issuing court citations, a non-compliance charge will appear on the customer's bill. The first charge will be \$137 which can be waived by taking a one-hour course online.
3. Stage 3 and 4 Surcharge: In deeper stages of drought, a surcharge encourages very high use customers to conserve. This will only affect the top 5% of water users.
4. Drip Irrigation: Revised rules for drip will help save water by better aligning the scheduled watering hours with the severity of the drought stage.
5. Irrigation Inspections: SAWS will begin reviewing irrigation plans prior to construction and also inspecting the installed system before it is approved.

The new rules and charges are expected to take effect in July.

Drought Stage	Edwards Aquifer *	Watering Days	Watering Times	Water Waste Enforcement	Drought Surcharge
Year Round	Above 660 ft.	Any day	midnight - 10 a.m. 9 p.m. - midnight		-
Stage 1	660 ft.	Once a week on your day	midnight - 10 a.m. 9 p.m. - midnight	Non-compliance charge for water waste violation - all stages	-
Stage 2	650 ft.	Once a week on your day	5-10 a.m. 9 p.m. - midnight		-
Stage 3	640 ft.	Once a week on your day	5-10 a.m. 9 p.m. - midnight		High use surcharge 20,000 gallons or more
Stage 4	630 ft. or as needed	Once EVERY OTHER week on your day	5-10 a.m. 9 p.m. - midnight		High use surcharge 12,000 gallons or more

\* 10-day rolling average

### YOUR BILL AND THE NEW DROUGHT RULE CHARGES

While the proposed drought rule changes are designed to encourage compliance and stewardship of our supplies, exactly how much your own bill might change will depend on your household's water use and other factors.

The charts in this link [https://wateringrules.com/wp-content/uploads/2024/05/05May\\_WaterNews.pdf](https://wateringrules.com/wp-content/uploads/2024/05/05May_WaterNews.pdf) show how the proposed rates may affect customer bills in different stages of drought. To learn more about how your own bill could be affected by the new charges, visit [wateringrules.com](https://wateringrules.com).

**KNOW THE NEW WATERING HOURS**

**STAGE 3**

CHECK THE TIME

5-10 AM

9 PM-MIDNIGHT

WATER ONCE A WEEK

KNOW YOUR DAY

M	T	W	T	F
0	2	4	6	8
1	3	5	7	9

LAST DIGIT OF ADDRESS

### Lawn Maintenance

Please be a responsible neighbor and keep up with the maintenance of your lawn. Help keep the neighborhood looking great by maintaining your yard with weekly mowing and trimming.



### KIND HUMAN SENIOR CARE

SERVING SENIORS WITH DIGNITY



#### Services:

- ✓ Provides in home senior care and transportation
- ✓ Support for Alzheimer's and Dementia care

830-253-0014

[www.kindhumanseniorcare.com](http://www.kindhumanseniorcare.com)



## CRIME PREVENTION TIPS WHEN YOU ARE AT HOME

- Replace or re-key all locks when you move into a new home or apartment.
- Keep windows and doors locked at all times.
- Have curtains or blinds on all windows, and keep them drawn.
- Require identification from all repair persons or public service individuals without opening the door.
- Hang up on frightening or obscene calls. Invest in an answering machine and screen your calls.
- On your answering machine message, never say you are not home. Just say you are not by the phone.
- If a prowler enters your home, GET OUT!! Go to a neighbor's house and call the police.
- If you come home and you think someone is in your home, DO NOT ENTER!! Go to a neighbor's house and call the police.



## Poison Control is a Phone Call Away

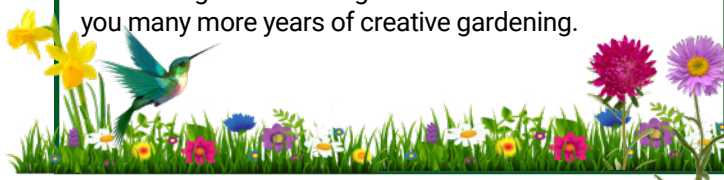


Emergency is 911, but there's another number you should post by the phone: Poison Control is 800-222-1222. If you have pets or know someone who does, don't forget Animal Poison Control at 888-426-4435. Having these numbers by the phone can save valuable time in an emergency.

## Yard of the Month

### CONTEST DURING THE MONTHS OF APRIL-AUGUST

The winner will be chosen at the end of the month by the board of directors and will receive a \$50 Lowe's gift card. Congratulations again to the James'. We wish you many more years of creative gardening.

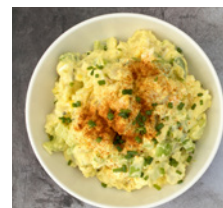


## Recipe Share

### CLASSIC POTATO SALAD

#### Ingredients for 8 servings:

- 3 pounds russet, Yukon Gold or Idaho potatoes, peels and cut into 1-inch cubes
- Salt and black pepper
- 1 cup mayonnaise
- ¼ cup sweet relish
- 1 tbsp. mustard
- 1 tsp. granulated onion or onion powder
- 6 hard-boiled eggs, peeled and diced small
- 2 celery stalks (optional)
- Sweet paprika, for garnish



#### Preparation:

Put the potatoes in a large pot; add 1 tablespoon of salt and cover with cold water 1 inch higher than the potatoes. Set over high heat and cook just until fork-tender, about 15-20 minutes. Drain potatoes and set aside to cool.

As potatoes cool, make the dressing. To a large bowl, add mayo, relish, mustard, and onion. Whisk to combine.

Add potatoes to the dressing, along with the diced eggs and celery if using. Stir gently to combine. Taste and season with salt and black pepper as needed.

Chill at least two hours, up to overnight. Finish with a sprinkle of paprika. Salad will keep four days in the refrigerator in an airtight container.



## ADVERTISE WITH US!

For information, call  
(210) 558-3160 or send an email to  
[Sales@NeighborhoodNews.com](mailto:Sales@NeighborhoodNews.com)

Published and distributed by:

**Neighborhood News, Inc.**

3740 Colony Drive Suite LL100, San Antonio, TX 78230

Ph: (210) 558-3160 • Fax: (210) 558-3163

Articles that appear in the Westover Place newsletter do not necessarily reflect the official position of Neighborhood News, Inc. and their publication does not constitute an endorsement therein. The appearance of any advertisement in the Westover Place newsletter does not constitute an endorsement by Neighborhood News, Inc. of the goods or services advertised. Stock images provided by stock.adobe.com. Neighborhood News, Inc. is not responsible for errors beyond the cost of the actual ad space. Any publication of Neighborhood News, Inc., whether draft or final is the sole property of Neighborhood News, Inc. and cannot be reproduced or distributed in any way, whether in print or electronically, without the express written consent of Neighborhood News, Inc.

[Info@NeighborhoodNews.com](mailto:Info@NeighborhoodNews.com) • [www.NeighborhoodNews.com](http://www.NeighborhoodNews.com)

Join

### In The Neighborhood

for a weekly dive into  
community matters

Scan the QR code below to sign  
up for insightful discussions  
and local highlights, landing in  
your inbox every Friday!



SCAN ME

## United Way Help Line: Dial 2-1-1



2-1-1 is a free,  
anonymous social  
service hotline that helps  
people find information  
about local resources in  
their community.