

THE

# FRONT PORCH

## News

Volume 12 Issue 5 • MAY, 2025



News and Information from the  
City of Bulverde and our Neighbors





# THE FRONT PORCH News

## **CITY OF BULVERDE ALL DEPARTMENTS**

**HTTP://BULVERDETX.GOV**

**MAIN NUMBER - 830-438-3612**

**METRO LINE - 830-980-8832**

**FAX - 830-438-4339**

**Bill Krawietz, MAYOR**

**Yvonne Chapman, COUNCIL**

**Christopher Goth, COUNCIL**

**Mark Morkovsky,  
MAYOR PRO TEM**

**Charles Hughes, COUNCIL**

**Clint Hays, COUNCIL**

**Joe Alexandre, COUNCIL**

## **COMAL COUNTY MAIN NUMBER**

**830-221-1100**

**JUDGE - 830-221-1105**

### **COMMISSIONERS COURT**

**Doug Leacock, COMMISSIONER PCT. 1**

**Scott Haag, COMMISSIONER, PCT. 2**

**Kevin Webb, COMMISSIONER PCT. 3**

**Jen Crownover, COMMISSIONER, PCT. 4**

**JUSTICE OF THE PEACE, PCT 2    CONSTABLE, PCT 2**

**830-387-7600**

**830-438-3117**

**ANIMAL CONTROL**

**830-608-2016**

**ROAD & BRIDGE**

**830-608-2090**

**SHERIFF'S**

**ADMINISTRATIVE OFFICE**

**830-885-4883**

**TAX OFFICE**

**830-221-1353**

## **EMERGENCY SERVICES**

**(IN CASE OF EMERGENCY DIAL 911)**

### **NON-EMERGENCY LINE**

**830-620-3400**

**BULVERDE SPRING BRANCH FIRE & EMS**

**830-228-4501**

**HEALTHCARE | INNOVATION | SCIENCES CENTRE**

**830-228-4504**

## **BSB CHAMBER OF COMMERCE**

**830-438-4285**

## **BSB ECONOMIC DEVELOPMENT FOUNDATION**

**830-885-4331**

## **MAMMEN FAMILY PUBLIC LIBRARY**

**830-438-4864**

## **FRONT PORCH NEWS**

**editor@bulverdetx.gov**

Some of the content herein may be the copyrighted property of the City of Bulverde, the contributing authors, or our publisher's licensors. No article from this publication may be used, reproduced, transmitted or distributed with the exception that you may photocopy one copy thereof for your personal, noncommercial, home use only. Articles that appear in The Front Porch News do not necessarily reflect the official position of the City of Bulverde, and their publication does not constitute an endorsement thereof. The appearance of any advertisement in The Front Porch News does not constitute an endorsement by the City of Bulverde.

As a City publication, the Front Porch News strives to maintain objectivity and accuracy in all published content. The newsletter must remain neutral in the publication of content that may be considered controversial, biased, or inflammatory within the community (e.g., political content or opinions, religious material, etc.). The newsletter differs from a newspaper in that opinion pieces are typically not included. Publication of contributing partner content is subject to review for applicability and appropriateness of a publicly funded communication initiative. The newsletter is produced in part through public funding, and is accordingly governed by the regulations set forth in Texas State Law.

# Bulverde Feed & Seed



## Come in for all your Feed & Pet Needs

Deer Feed ~ Feeders

Horse ~ Livestock Feed

Quality Hay

Pet Food

## (830) 438-3252

Hwy 281 Just south of FM 1863

**www.BulverdeFeed.com**



## Farewell as City Manager of Bulverde, Texas

By Charles West

As I pen this final article for the Front Porch News, it is with a mixture of gratitude and nostalgia that I bid farewell to my role as the City Manager of Bulverde, Texas. Serving this wonderful community has been one of the most rewarding experiences of my career, and I am deeply honored to have had the opportunity to work alongside such dedicated individuals and residents.

Looking back on my time as City Manager, I am immensely proud of the progress we have made together. From the successful implementation of community projects to the enhancement of public services, our collective efforts have truly transformed Bulverde into a thriving and vibrant city. The support and collaboration from the city council, staff, and citizens have been instrumental in achieving our shared vision for a better Bulverde.

One of the highlights of my tenure has been the numerous community projects that have come to fruition. Whether it was the expansion of our parks and recreation facilities, the improvement of our infrastructure, or the development of new housing and commercial spaces, each project was a testament to our commitment to creating a high-quality living environment for all residents.

Enhancing public services has always been a top priority. We have worked diligently to ensure that our police services are equipped with the resources they need to keep our community safe. Additionally, we have focused on improving our public works to provide reliable and efficient services to all corners of Bulverde.

None of these achievements would have been possible without the unwavering support of the Bulverde community. Your trust, engagement, and active participation in city affairs have been the driving force behind our success. I extend my deepest gratitude to every one of you for your contributions and for making Bulverde such a special place to call home.

I am grateful to the city council members for their guidance, vision, and steadfast commitment to our community. Their leadership has been invaluable in navigating the challenges and seizing the opportunities that have come our way. To the city staff, thank you for your hard work, professionalism, and dedication. Your efforts have been the backbone of our city's growth and development.

As I step down from my position, I am confident that Bulverde's future is bright. The foundation we have built together will continue to support the city's growth and prosperity. I encourage everyone to stay engaged, support your new city manager, and remain committed to the values that make Bulverde unique.

In closing, it has been an honor and a privilege to serve as your City Manager. I will always cherish the memories, and the relationships forged during my time here. Thank you, Bulverde, for allowing me to be a part of your journey.

*With heartfelt gratitude and warmest regards, Charles*



## Mayor's Point

By Bill Krawietz, Bulverde Mayor

As my term as Mayor limits out, many have asked what kind of community service will I focus on next. Well, I'm still President of the Bulverde Landowner's Association (BLA), the HOA that started the whole incorporation effort. My cleanup of some old tennis courts on Cougar Bend, overgrown with weeds, is how I became involved with that group and community service.

Before it is too late, we need to put together a history of the City. To my surprise, I just recently found out there isn't even a record of all the former Mayors or Councilmembers. Sadly, there are only a few of us that were part of the City during the early days that are still around.

If someone looks at a map to the City and doesn't know how it was formed, the boundaries may look very strange. In reality, the boundaries were very well thought out and served several strategic purposes.

Most people don't know that the City of Bulverde is actually the consolidation of five separate cities into one. One of the cities, Bulverde Northwest actually had to incorporate twice, because the first incorporation was challenged and overturned by a Concrete Batch Plant. It took a total of seventeen elections to incorporate and consolidate those five separate entities into one City of Bulverde.

I think it should be recorded that through the generosity of the BLA donating land for the BSB Activity Center, the Community Garden, City Hall, the County Annex, and the Frisbee Golf Park that they exist. Not that the BLA needs recognition, it wishes show by example, to encourage others to donate land for public use or the betterment of the community.

At my recent Town Hall Meeting, I mentioned a Satire Cartoon that ran for several years in a weekly newspaper, the Bulverde Standard. The Standard was always very critical of Council back then, in both its printed words and in caricature. I saved all of those papers and hope to scan the images and add them to the history of the City.

*(Continued on page 4)*

### ADVERTISE WITH US!

Info@NeighborhoodNews.com  
www.NeighborhoodNews.com

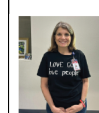
For advertising sales and information,  
please call or send an email to

Sales@NeighborhoodNews.com



Published and distributed by:  
Neighborhood News, Inc.  
3740 Colony Dr. Ste LL100  
San Antonio, TX 78230  
Ph: (210) 558-3160

Articles that appear in the Bulverde newsletter do not necessarily reflect the official position of Neighborhood News, Inc. and their publication does not constitute an endorsement therein. The appearance of any advertisement in the Bulverde newsletter does not constitute an endorsement by Neighborhood News, Inc. of the goods or services advertised. Neighborhood News, Inc. is not responsible for errors beyond the cost of the actual ad space. Any publication of Neighborhood News, Inc., whether draft or final is the sole property of Neighborhood News, Inc. and cannot be reproduced or distributed in any way, whether in print or electronically, without the express written consent of Neighborhood News, Inc. ©Neighborhood News, Inc.



The Hope Center, inspired by the McKenna Foundation's Choose Kindness Campaign, celebrates Dana Roby as our recipient of the Choose Kindness Award for May 2025.

Dana is a woman of faith, grace, and compassion—the true personification of a servant's heart. Each day, she selflessly gives of herself to those around her, advocating for others without judgment. As both a nurse and a person, Dana's impact on the community is immeasurable. She is a constant ray of light, uplifting and encouraging everyone she meets! Through her selflessness, patience, and wisdom, Dana has transformed countless lives, making the world a better place for all.

To learn more about the Choose Kindness campaign and/or to nominate someone, visit  
<https://mckenna.org/choosekindness/>  
How will you CHOOSE KINDNESS today?

**ChooseKindness**



(Continued from page 3)

The anonymous artist who drew those went by the pen name Satire Sam. It wasn't until years later that I found out who the creator was.

A couple days after the Town Hall, someone dropped off a box at City Hall addressed to me. This person didn't leave a name and wasn't identifiable when staff went back and looked at security video. This left staff suspicious, so they went ahead and opened the box.

Shortly after, I got call from the City Manager to notify me of the delivery. Satire Sam had returned to draw a new cartoon dated 4-2025. It was put in a nice frame, behind glass with double matting. It depicts all of City Council, except for Mark Morkovsky, but does include recently deceased member Chuck Hughes.

As of now, I do not know on what platform or where to compile this history. Some may be included on the City Website if the new Mayor sees fit, some things like Satire Sam may not be a good fit there. I might just create a website independent of the City, then I reserve full oversight. I will definitely mention my progress and future endeavors on my personal Facebook page for those who wish to follow.

It has been a pleasure and an honor serving the City and Community over the years and will definitely be around to assist the new Mayor and Council if they have any questions or need any assistance.



## The Beginning of A New Chapter



A reception honoring Mayor Bill Krawietz for his dedicated service to the City of Bulverde

**SATURDAY, MAY 10  
5 - 8 PM**

**EAGLES LANDING LODGE  
2350 BULVERDE RD  
BULVERDE, TX 78163**

This is a come and go cocktail event.  
Light bites provided. Cash bar available.

- Business casual attire -  
**PLEASE RSVP BY MAY 1ST**  
[pp.events/mayorkrawietz](https://pp.events/mayorkrawietz)



## May Programs at the Library

As we get ready to jump into the 2025 Summer Library Program don't forget to stop by the library in May! Our youth programs will be taking a short break beginning May 12th through June 6th in preparation for summer events.

Despite a pause in youth programming, there will still be plenty to do at the Mammen Family Public Library this May! We are excited to collaborate with two organizations to offer special programs!

### **Healthy Texan Week with Texas A&M AgriLife Extension Service**

Saturday, May 10th 1:00pm-3:00pm: Join us for this family friendly event, as we partner with community organizations and share healthy meal ideas, tips, and resources.

### **The Karankawas and Tonkawas: A History of Power and Perseverance with Friends of the Guadalupe River State Park and Honey Creek State Natural Area**

Saturday, May 24th 1:30pm-3:30pm: Join us for this presentation by Dr. Tim Sieter as he explores the histories of the Karankawas and the Tonkawas, debunking common misconceptions and highlighting their resilience.

### **Makers Fair with the MFPL Makerspace**

Thursday, May 29th 5:00pm-7:00pm: Join us for an Open House featuring Makerspace equipment, the Library of Things, live demos, and more!

### **Mark Your Calendars: 2025 Summer Library Program!**

Mark your calendars for Saturday, June 7th! We will be kicking off our 2025 Summer Library Program (SLP) from 10:00am-2:00pm! Get registered for the reading challenge, pick-up your free shirt, enjoy a sno-cone, and more! Our



## Library continued

Summer Library Program consists of eight weeks of fun that is completely free and open to all ages!

This year's SLP theme is **Color Our World!** We will be exploring the colors of the world in art, nature, books, and more! Our SLP combines all aspects of our library, from learning, to reading, to creating, and fun for all ages! No one is too young or too old to participate!



Stay up to date with library events by visiting our online calendar at [mammen.librarycalendar.com](http://mammen.librarycalendar.com) or picking up a printed program guide at the library!

## Bracken Christian School's Emma Olson Competes in National Hockey Tournaments

By Verlyn Maldonado

Fifteen-year-old Emma Olson, a freshman at Bracken Christian School, is proving that hard work, perseverance, and teamwork can take you to the top. In just a few short years, she has gone from a curious beginner to competing at the highest level, recently representing her teams on the national stage in two major USA Hockey tournaments.

Emma's Dallas Stars Elite Girls 19U AA Hockey team qualified for the USA Hockey Nationals after securing second place among some of the best teams from Arizona, Utah, Colorado, New Mexico, and Idaho. The team traveled to Cleveland, OH, for the 19U Tier 2 USA Hockey Nationals from April 2 to 6, 2025, where they competed fiercely but did not place.

In addition to this, Emma competed with the Team Texas Girls High School team as one of only 20 girls selected across the entire state of Texas—an incredible honor—and helped lead Team Texas to a third-place finish in the tournament. This tournament was held at the USA Hockey Nationals in Irvine, CA March 26 to March 30, 2025.

Emma's hockey journey began at age 10 after attending a girls' state hockey tournament in Minnesota with her father. Unlike many players who start as young as three, Emma had to push herself to catch up. Through relentless training and the encouragement of her parents and coach, she honed her skills and developed a deep love for the game.

"A hockey player's life is very different—it's all about eating, sleeping, and breathing hockey. You put in the work on the ice, but it's really what you do off the ice that sets you apart,"

Emma explains. She credits tiny details, like footwork and mental preparation, for making the biggest difference in her skill level.

Playing defense, Emma is a crucial part of her team, protecting the goal and taking as many shots as she can. Her rigorous schedule includes year-round training, early morning practices from Monday to Thursday, and summer hockey camps. She and her team travel frequently to Dallas for weekend games, balancing school, sports, and personal interests like reading, paintball, and spending time with friends.



But hockey isn't just about individual skill—it's a team effort. "My teammates make me better," Emma says. "From good passes to scoring goals, they set you up to make amazing plays. And when you mess up, they're there to save you." She also acknowledges the dedication of her coaches and the sacrifices made by her parents for the opportunities she has had.

Despite nearly quitting earlier this year when she didn't receive an early callback during tryouts, Emma remained. "Not getting down on yourself is key. Hockey is a mental game, and everything you do affects others." Now, she's playing up against older competitors and holding her own, thanks to the support of her parents, teammates, and coach Mike Linstrot.

Emma dreams of playing at the collegiate level. She is a testament to resilience and passion. We believe she will see her dream fulfilled.



## BRACKEN

CHRISTIAN SCHOOL



# NOW ENROLLING

PRE-K THROUGH 12TH GRADE

TRADITIONAL AND HYBRID SCHEDULES

BULVERDE, TX

[BRACKENCHRISTIAN.COM](http://BRACKENCHRISTIAN.COM)



BULVERDE MUSIK IN THE PARK PRESENTS

# SPRING LIVE CONCERT SERIES

AT THE BULVERDE COMMUNITY PARK

**SATURDAY**

THE MUSIK STARTS AT 7:00PM

**MARCH 22ND**

RUBEN V

**APRIL 5TH**

MATT KIRK AND THE GÜEYFARERS

**APRIL 26TH**

JESSE STRATTON BAND

**MAY 17TH**

UNDERCOVER

BCPMUSIK@GMAIL.COM

FACEBOOK @BCPMUSIK

PLATINUM 

**GOLD**

 State Farm

 H-E-B

Helping Here

 Armed In America

 Bulverde Vision Source

 SAUT

WATER WELL SERVICE

 FISCHER'S

WILDMAN'S FAMILY FOUNDATION

**SILVER**

 Scott HAAG

 Mt. Electric

 THE CRAGGS

 S.T.A.G.E.

 Zarter IRRIGATION & SERVICES LLC

530-885-6492

 WEST RIDGE CONSTRUCTION

 SONORA BANK

 Dermatology Center at Spring Branch

 Pool Services

 Puddle Jumper Well Company

 Bulverde Feed & Seed, LLC

The Ousset Agency Inc.

**BRONZE**

 State Farm

 NATURAL BRIDGE CAVERNS

 Bulverde Park

 Bulverde Park

 Bulverde Park

Musik in the Park wishes to acknowledge the contributions of our 2025 Concert Series Sponsors. Thank you for your support!

 Musik in the Park

SPECIAL THANKS TO:

 City of Bulverde

 THE BECK

 BULVERDE SPRING BRANCH AREA CHAMBER OF COMMERCE

 BULVERDE SPRING BRANCH AREA CHAMBER OF COMMERCE



## MOVIES IN THE PARK

**MAY 9**

**THE WILD ROBOT**



**JUNE 13**

**INSIDE OUT 2**



**STARTS AT DUSK**

**BULVERDE COMMUNITY PARK**

29815 BULVERDE LANE

**BRING YOUR OWN CHAIRS OR**

**BLANKETS**

**CONCESSIONS AVAILABLE**

**OR BRING YOUR OWN**



Sponsored by the City of Bulverde, Bulverde PD, and the Mammen Family Public Library



# Local Events Calendar

## Spotlight Events

### COFFEE w/the CITY

Friday, May 2; 9:00a–10p; 30360 Cougar Bend, 78163

### ELECTION DAY

Saturday, May 3; 7:00a–7:00p;  
Mammen Family Public Library,  
Comal County Offices Bulverde Annex

### MAYOR'S FAREWELL PARTY

Saturday, May 10, 5:00p–8:00p  
RSVP required by May 1st. (See more info in this issue.)

### Event

### May

### June

**Bulverde Planning & Zoning Commission**  
30360 Cougar Bend, 78163 (1st Tuesday)

6th; 6:00p

3rd; 6:00p

**Bulverde City Council**  
30360 Cougar Bend, 78163 (2nd Tuesday)

13th; 6:30p

10th; 6:30p

**Bulverde Parks & Rec Advisory Board;**  
30360 Cougar Bend, 78163 (3rd Tuesday)

20th; 6:30p

17th; 6:30p

**Hill Country Kiwanis Club**  
(1st & 3rd Wed.) Ay Chiwawa,  
403 Singing Oaks, 78070

7th & 21st; 8:00a

4th & 18th; 8:00a

**Bulverde Area Rural Library District Board**  
(3rd Thurs.) 131 Bulverde Xing, 78163

15th; 9:30a

19th; 9:30a

**Bulverde Lions Club** (2nd & 4th Thurs.)  
747 E. Ammann Rd., 78163

8th & 22nd; 6:30p

12th & 26th; 6:30p

**Bulverde Market Day** (2nd & 4th Sat.)  
2541 Bulverde Road, 78163

10th & 24th; 9:00a–2:00p

14th & 28th; 9:00a–2:00p

**Bingo in Bulverde**  
hosted by the BSB Chamber (1st Fri.)  
1747 E. Ammann Rd., 78163

2nd; 5:00p (doors open),  
5:30p (Early Bird games start),  
6:30p (regular games start)

6th; 5:00p (doors open),  
5:30p (Early Bird games start),  
6:30p (regular games start)

**VFW Bulverde Post 12205**  
**Monthly Meeting** (2nd Tues.)  
30280 Cougar Bend, 78163

13th; 7:00p

10th; 7:00p

**VFW Bulverde Post 12205**  
**Burger Night** (3rd Friday)  
30280 Cougar Bend, 78163

16th; 5:00p–8:00p

20th; 5:00p–8:00p

**Movies in the Park**  
Bulverde Community Park  
29815 Bulverde Lane, 78163

9th, The Wild Robot  
Movie starts at dusk; Bring your  
own chair, etc.; concessions  
available

13th, Inside Out  
Movie starts at dusk; Bring  
your own chair, etc.;  
concessions available

**Bulverde Musik in the Park**  
Bulverde Community Park  
29815 Bulverde Lane, 78163

17th; Music starts at 7:00p; **FREE**;  
Band: Undercover

—

**S.T.A.G.E.** presents **When Bullfrogs Sing**  
**Opera**, a comedy by Carl L. Williams

May 1\*,2, 3, 4, 9,10,11,16,17,18; \*Opening night performance is a  
benefit for The SHARE Center; 1300 Bulverde Rd., 78163  
<https://www.stagebulverde.org/> 830-438-2339

**MEMORIAL DAY**  
Monday, May 26th

★ ★ ★ ★ ★  
**MEMORIAL DAY**  
REMEMBER & HONOR





# Bulverde Police DEPARTMENT

The following information is an excerpt from the March Monthly Report presented at the April 8, 2025 City Council meeting. The complete report can be viewed/downloaded from the City of Bulverde's website in the April 8 City Council meeting packet. The Bulverde PD presents this report every month and it is available in its entirety for public review.

[https://bulverdetx.gov/AgendaCenter/ViewFile/Agenda/\\_04082025-357](https://bulverdetx.gov/AgendaCenter/ViewFile/Agenda/_04082025-357)

## CALLS FOR SERVICE

Bulverde Police Department had 1,243 Calls for Service.

Blanco Road	5	Hwy 281	254
Bulverde Crossing	7	Hwy 46	182
Bulverde Estates	36	Oak Village N	36
Bulverde Hills	11	Oakland Estates	3
FM 1863	25	Shepherd's Ranch	19
City Hall/BPD Walk-ups	7	Belle Oaks	32
County	15	Outside County	1
Centennial Ridge	48	Windmill Ranch	1
Hghlands	0	Singing Hills	147
Bulverde City Park	133	Comal Trace	2
Edgebrook	20	Ammann Rd	80
Persimmon Hill	82	Bulverde Road	54
Elm Valley	39	Heimer Lange	3
Bulverde Oaks	0	BerryOaks	1

## ARRESTS

Total Arrests—15

Assault .....	1
Driving While Intoxicated.....	5
Possession Controlled Substance.....	1
Warrants.....	4
Possession Dangerous Drugs.....	1
Trespassing .....	1
Theft \$750-\$2500 .....	1
Driving While Intoxicated BAC <.15%.....	1

## ACCIDENTS: Bulverde Police investigated 20 crashes

Location		Property	Injury	Fatality
Hwy 46	7	4	3	
FM 1863	3	2	1	
Hwy 281	11	9	1	1
Bulverde Road	1	1		

## TRAFFIC ENFORCEMENT

Citations.....	616
Violations.....	776
Warnings.....	157

## Average Speed Citation (mph over the limit)

Hwy 281 .....	21.0
Hwy 46 .....	20.1
FM 1863 .....	13.0
Other.....	20.1

## INVESTIGATIONS

### Code Compliance

Code Compliance.....	13
Cases Closed.....	13
Follow Up Activities.....	0
Citations Issued.....	0
Warning Citation.....	1
Pending.....	0

### BPD Cases

Assigned .....	23
Interviews.....	92
Filed County DA .....	14
Filed Municipal Court.....	0
Warrants.....	10
Subpoenas .....	2
Citation.....	0
Closed .....	40
Supplements.....	171
Calls for Service .....	7
Reports.....	2
Court .....	0 hrs

100% TEXAS  
100% TEXAN

From life-changing events to everyday miracles, I'm here to help you protect the people, places and things that matter most. For great rates and no-hassle service, contact me for a **FREE 360 Review®** today.



**John  
Meche**  
Agent

[jmeche@txfb-ins.com](mailto:jmeche@txfb-ins.com)  
**830.341.1805**



**TEXAS  
FARM  
BUREAU  
INSURANCE®**  
AUTO / HOME / LIFE

Coverage and discounts are subject to qualifications and policy terms, and may vary by situation. Life insurance provided by Southern Farm Bureau Life Insurance Company, Jackson, MS. ©2025 Texas Farm Bureau Insurance Companies, CML0125



# There's a CAT for That!

By LeAnn Oatman

## Celebrate June with Paws & Whiskers

As the warmth of June envelops us, cat lovers everywhere have a reason to purr with joy. June is a month dedicated to our beloved feline friends, boasting several special days that celebrate the charm and companionship of cats. From National Adopt a Cat Month to Cat World Domination Day, Take Your Cat to Work Day, and National Hug Your Cat Day, June is truly a feline fiesta. In addition, the month also includes National Foster a Pet Month and Pet Appreciation Week, making it the perfect time to highlight the joy and responsibility of pet ownership.

## Mark Your Calendars: June 14th

In the spirit of these celebrations, Animal Rescue Connections, Bulverde's favorite cat rescue organization, is thrilled to announce our first-ever "There's a Cat for That!" celebration. Scheduled for June 14th at Bulverde Spring Branch Activity Center (30280 Cougar Bend), this event promises to be a heartwarming tribute to our frisky feline friends and a significant opportunity to support a noble cause.

## A Purr-fect Day of Fun and Fundraising & Information

The "There's a Cat for That!" event is not just a celebration; it's a community gathering aimed at raising essential funds for our Trap-Neuter-Return (TNR) efforts and preparing kittens for their forever homes. Our community's support is vital to the success of these initiatives, and we invite everyone to join us in making a difference.

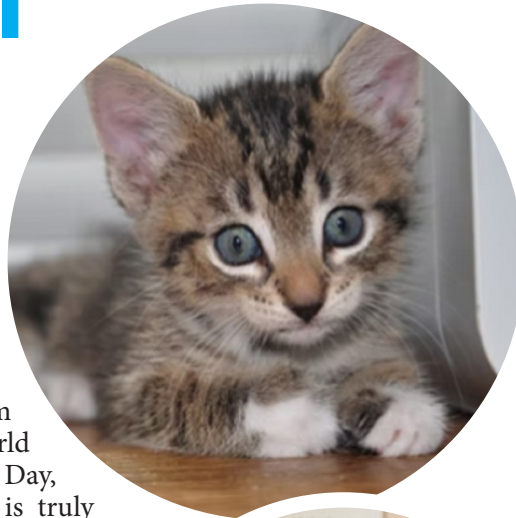
**The day will be filled with exciting activities for all ages.**

## Highlights include:

- **Silent Auction:** Bid on a variety of unique items with all proceeds going directly to our rescue efforts.
- **Raffle Prizes:** Try your luck with our raffle draws. Fabulous prizes await the winners, adding an element of excitement to the day.
- **Pet-Centric Merchandise:** Browse and purchase some cat and pet-themed items.
- **Guest Speaker:** Learn something new about cats from our special guest speakers.
- **Delicious Picnic-style Lunch:** Enjoy a scrumptious meal with our specially prepared lunch. Please note that advance purchase and/or reservation is required to ensure we can cater to everyone. Purchase your ticket at [www.animalrescueconnections.org/theres-a-cat-for-that](http://www.animalrescueconnections.org/theres-a-cat-for-that)

## Stay Connected

For more information about the event, please follow Animal Rescue Connections on Facebook and Instagram. Our social media pages will provide updates and stories about cats



available for adoption. Additionally, our website is a comprehensive resource for all event details and more about our rescue efforts.

## Join Us

We need our community to help us celebrate and make this event a success. Whether you're a longtime cat lover or new to the joys of feline companionship, "There's a Cat for That!" promises to be a day filled with fun, laughter, and the heartwarming knowledge that you're making a difference in the lives of cats in need. Together, we can ensure that every cat finds its perfect forever home.



**ANIMAL RESCUE CONNECTIONS**

Helpline: 210-474-0083

Email: [info@animalrescueconnections.org](mailto:info@animalrescueconnections.org)

Website: [www.animalrescueconnections.org](http://www.animalrescueconnections.org)

CLIENT FOCUSED ~ AGENT OWNED

**JoDee Gilmore**

BROKER ASSOCIATE, Realtor®



*Ask about our Variable Commission Rates*

**Planning to make a move in 2017? CALL ME! I can help you get your home in TOP selling shape!**

Specializing in Residential Home & Land Sales, Owner Financing Properties, Luxury Home Marketing & Sales, VA & TX Vet Programs



210-887-5885 • [JoDeeGilmore@gmail.com](mailto:JoDeeGilmore@gmail.com)

27560 Old Blanco Road

[www.JoDeeGilmore.com](http://www.JoDeeGilmore.com)



## From Our House to Yours



### Advancing the CWPP: Upcoming Steps

In our previous article, we outlined the significant steps we have already taken toward developing a comprehensive Community Wildfire Protection Plan (CWPP). These steps included the formal proclamation, a concentrated community assessment, the upload of key data into the Texas A&M Forest Service database, and the establishment of a department working group. As we continue to make strides, we are now focused on the next phase of the CWPP, which includes additional planning, collaboration, and training efforts. This article outlines the upcoming steps and how we will begin to engage the community in this vital process.

- 1. Educating Local Stakeholders:** The success of a CWPP also hinges on the ability of our team to effectively involve a broad range of local stakeholders, inclusive of local government officials, emergency services professionals, and other related entities. Substantive input from a diversity of interests will ensure that the final document reflects the highest priorities of the community.
- 2. Train the Trainer:** We will initiate a "Train the Trainer" program aimed at equipping key personnel with the tools

and knowledge necessary to train others in community outreach efforts related to wildfire preparedness. This training will ensure that we have a well-prepared team ready to lead educational sessions for the wider community, with support from experts at the Texas A&M Forest Service.

- 3. Community Outreach Classes:** Following the "Train the Trainer" program, we will hold two community outreach classes, tentatively set for June. Aimed at HOA/POA board members and community leaders, these sessions will equip them to share wildfire risks and preparedness strategies with their neighbors, strengthening overall community resilience. If you serve in one of these roles, contact Gwen Pain via e-mail at [gwen.pain@bsb911.com](mailto:gwen.pain@bsb911.com) to be added to the participant list.
- 4. Drafting the CWPP:** The drafting of the CWPP will run concurrently with other activities. During this time, the workgroup will refine strategies, assess risks, and develop detailed plans aimed at reducing wildfire threats within the service district. This phase will involve collaboration with local experts, residents, and other stakeholders.
- 5. CWPP Working Group Meeting:** The final step in developing the CWPP is for the core team to reconvene and mutually agree on the fuels treatment priorities, preferred methods for fuels treatment projects, the location of the wildland-urban interface, structural ignitability recommendations, and other information and actions to be contained in the final document.

As we move forward, these planned initiatives will help ensure that the CWPP is comprehensive, actionable, and effective in mitigating wildfire risks while enhancing community safety and preparedness.

## Why go Big on Gigs with GVTC?

Experience lightning-fast connectivity with our brand new MultiGig Fiber internet, now available in blazing 2 Gig and 5 Gig options!

- ✓ **Fiber direct to your home**—no sharing bandwidth with neighbors
- ✓ **Ultra-fast symmetrical speeds**—upload as fast as you download
- ✓ **Connect more devices** with less network congestion

**2 GIG**  
**UP TO**  
**5 GIG**

**PRICE LOCK**

No contract.



**Get connected today!**

866-471-8398 [gvtc.com/BigGig](https://gvtc.com/BigGig)

See terms and conditions at [gvtc.com/BigGig](https://gvtc.com/BigGig) for more info.





# BSB CHAMBER CLAY SHOOT



THANK YOU TO OUR  
PRESENTING SPONSOR:



TEXAS REGIONAL BANK  
The people you know™



Frost  
BANKING INVESTMENTS INSURANCE



THE GVTC FOUNDATION



M&S ENGINEERING  
ELECTRICAL | CIVIL | MEP

BLUEBONNET  
PUMP CO



Leitrim  
ENTERPRISES



## Thank You to Our Clay Shoot Sponsors!

The Bulverde Spring Branch Area Chamber of Commerce held its 5th Annual Sporting Clay Shoot on March 13th at the beautiful Good Bull Ranch. With over 84 shooters participating, including two student teams, it was a fantastic day of fun, camaraderie, and competition!

We are incredibly grateful to Good Bull Ranch—and especially Eric Bernal and Ryan Gold—for hosting this event and for their generous time and effort in making it a success.

### Congratulations to our winners

**1st Place—KJ Petersen Team, 2nd Place SVHS FFA Shooting Team and 3rd Place—Frost Bank.**

This event would not be possible without the support of our amazing sponsors. A special thank you to:

- **Presenting Sponsor**—Field Construction, Inc.
- **Tumbler Sponsor**—Texas Regional Bank
- **Gold Sponsors**—Frost Bank, GVTC Foundation, and M & S Engineering
- **Lunch Sponsor**—Grill Masters Pro Shop
- **Beverage Station Sponsor**—Brad Moore Builders
- **Interactive Station Sponsors**—Capital Farm Credit and My Urgent Care - Bergheim
- **Towel Sponsor**—Leitrim Enterprises, Inc.

- **Porcelain Station Sponsor**—Bluebonnet Pump Co
- **Station Sponsors**—Elk Contracting and Smithson Valley Propane

We'd also like to recognize and thank our dedicated volunteers, committee, and staff who helped bring it all together—with special thanks to Geri Ray, Vivian Garcia, Trisha Barney, and Missy Dobbins.



Are you  
turning 65?  
Call your  
local licensed  
Humana  
sales agent.

**Humana.**



**Justin Cuadra**  
210-790-1785  
(TTY: 711)

Monday – Friday  
8 a.m. – 5 p.m.  
JCuada1@humana.com

Y0040\_GHHHXDFEN23a\_BC\_C



Mark your calendar  
now and plan to  
join us for our  
**6th Annual Sporting  
Clay Shoot in Spring  
2026!**



The **HOPE** Center



Tuesday  
thru  
Saturday  
10AM-4PM

**THRIFT STORE**

The **-&-**  
Boutique

6260 US Hwy 281 N. Spring  
Branch, TX 78070



# **Free Water Conservation Series** By Dr. Larry Sunn and Dr. Steven Grainger

A weekly water conservation series to improve Hill Country residents' understanding of our limited local water resources and heighten our sense of personal agency to ensure future generations enjoy healthy streams and clean water resources. These free workshops were developed by Dr. Steven Grainger and Dr. Larry Sunn in response to common questions and concerns about our ongoing drought conditions and topics related to water conservation, water quality, and gardening issues. The workshops provide an overview (with questions and answers, but no quizzes) for residents to better understand where our water originates and how to protect this increasingly scarce resource.

<https://www.rainbees.com> will present fourteen 1.5-hour sessions, from 12:00 to 1:30, on successive Mondays beginning June 2nd through September 8th. There will be no session on Labor Day, September 1st. It is OK to bring your lunch.

Please help us know how many chairs to stage, by registering for sessions online at <https://mfplibrary.org/adults> under the **Programs tab**. **Topics include:**

**Aquifers**—Aquifer types, current Comal County water table levels, our two types of aquifers, common aquifer misconceptions, depletion and replenishment, and filtration rates.

**Rain Harvesting**—Capturing rain for potable or irrigation purposes, understanding rainwater needs, storing rainwater, assessing a rainwater collection area, filtering leaves & debris, water filtration, monitoring the water level, and caring for a system. This popular session repeats on September 8th.

**Rain Barrels and Wicking Gardens**—We'll demonstrate and build a rain barrel in class that will be given to a lucky attendee; how to build a wicking garden system; two wicking garden prototypes will be built and given to attendees.

**Drip Irrigation**—How to install a drip irrigation system from the spigot to garden, bit by bit, fitting by fitting, we'll discuss choosing and installing system components.

**Landscape & Lawn Care**—Discover your lawn and native plant water frequency and needs, the basics of proper lawn maintenance, fertilizing, mowing, and watering.

**Find and Fix Leaks**—Finding common household water leaks, providing tips for optimizing indoor water efficiency, how to check your toilet for leaks, inspect common places you may find leaks, and how to find "sneaky leaks."

**Rain Gardens, & Prairie Ponds**—Design techniques for planning, building, and maintaining a rain garden, the session covers background science, site investigation, design, plant and material selection, as well as installation.

**Buzz of Bees**—Designed for beginners and non-beekeepers, you walk in knowing little about bees, their structure, and their work; then leave "bee-aware" or maybe ready to get started with your own backyard beehive. No bee suit is needed!

**Pollinators**—Discover the best native plants to attract bees, butterflies, hummingbirds, and beneficial wildlife, the session is presented from an artistic and scientific point of view, designed to appeal to all levels of pollinator gardening.

**Xeriscaping with Native Plants**—Native plants can be challenging yet offer unique opportunities to cultivate stunning landscapes while markedly reducing water use, delve into planning, soil, plant selection, irrigation needs, mulch, and maintenance.

**Composting**—Procedures for composting, acceptable components, components to avoid, along with options for establishing a compost container, bin, or pile.

**Pruning and Winterizing**—Two workshops focusing on tools, procedures, and essentials of when and how to prune trees and shrubs; the first workshop provides insight and information while the second workshop focuses on

physically applying learned pruning techniques to plants in class. We'll cover making proper cuts, different forms of pruning, and pruning plants at the correct time.

**For further information contact the Mammen Family Public Library or visit <https://www.rainbees.com>**

(Open source, royalty-free Water Conservation photo from Pixabay at: <https://pixabay.com/photos/to-protect-hands-ecology-protection-450596/>)



## **GROW NATIVE!**

Spring is the perfect time to make the switch to native Texas plants and xeriscaping. These drought-tough beauties thrive with minimal water while providing year-round color and wildlife habitat.

Scan to view more outdoor conservation tips to help protect our water supply.



**TEXAS WATER  
COMPANY**

[txwaterco.com](https://txwaterco.com)



# The Buzz from the Garden

Information provided by the  
Comal Master Gardener Association

## MAY GARDEN TO DO LIST

**VEGETABLES:** May is the time to do some harvesting and garden cleaning after spring. Look for insects and disease. Get ready for the hot summer by fertilizing now if you have not already.

- Harvest tomatoes when they start to turn from green to pink. Let them ripen on the kitchen counter or windowsills. There is no reason to leave them on the vine so that insects can eat them first. Tomatoes will probably stop blooming when temperatures exceed 70 degrees at night and 90 degrees during the day.
- Harvest your potatoes. Do not wash them. Just dust them off and store them in a cool dry place. Wash them before you cook them.
- Monitor the onions and when the tops fall over, pull them and let the onions lie on the earth until dry. For the best taste, just brush off the dirt and peel them.
- Spinach and lettuce are past their peak, harvest them and replant the empty spaces with warmer weather vegetables.
- May is a good time to plant okra, southern peas, sweet potatoes, pumpkins, and watermelons.

- As temperatures get warmer, both day and night temperatures might interfere with pollination and fruit set in many vegetables. Snap peas tend to drop their flowers in these conditions. Squash has a tendency to grow a large number of male flowers that don't produce fruit.

**PEST WATCH: GRUB WORMS** or **JUNE BUGS**, *Phyllophaga spp.* are different stages of the same insect in Texas. As a beetle they are 5/8 inch long and are reddish brown. They appear in May and June. The female tunnels 2 to 5 inches into the ground and deposits her eggs. The larvae remain in the ground until the next spring and eat turfgrass and roots of other plants. Wait until late June and July to treat so the grubs are underground and feeding.

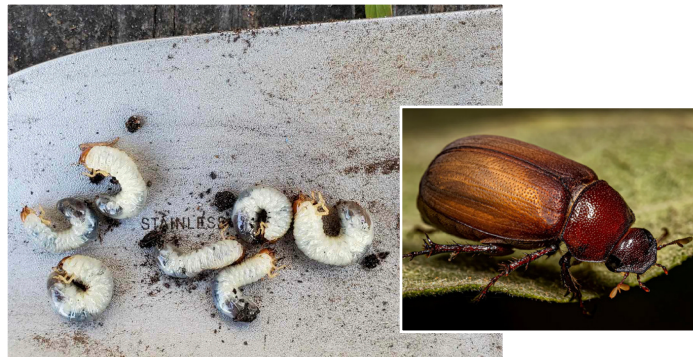


Photo source credits:

<https://homesteadandchill.com/kill-grubs-beneficial-nematodes/?srsltid=AfmBOoohjx7UjZriJvJGfD0MaqxRvZPH1aofBVHu5XDw4rvNh5ePU4>

<https://mosquitonix.com/blogs/news/everything-you-need-to-know-about-june-bugs>

(Continued on page 14)

**Bulverde Hills Dental**  
General Dentistry  
2647 Bulverde Road  
Bulverde, Texas 78163  
830.980.9004

John C. Sykes, D.D.S., P.A.  
Alyssa R. Cobb, D.D.S.  
No Insurance?  
No Problem!  
Ask about our  
BHD Membership Plan!

Barrett S.  
Trevor C.  
Landen C.  
Changa S.  
Benson C.  
Axl S. (Therapy Dog)  
Ringo S.

Visit our website for specials...  
[www.bulverdehillsdental.com](http://www.bulverdehillsdental.com)  
Customer Service is Our First Priority!

"Like" us on Facebook  
for a chance to win  
monthly contests!

Ad Design and Photography by Sam Roberts

## FREE EVALUATION

For Braces, Dentures  
Wisdom Teeth Removal  
or Second Opinions  
~Up to \$160 Value~

New Patients Only \* X-Rays not included.

With this coupon.

Cannot combine with other offers.

Expires 12/31/25

## \$50.00 Whitening

With Comprehensive Exam,  
Full Set X-Rays,  
Routine Cleaning, & Fluoride  
~Up to \$740 Value~

With this coupon.

Cannot combine with other offers.

Expires 12/31/25

## 50% OFF

With Comprehensive Exam,  
Full Set X-Rays,  
Routine Cleaning, & Fluoride  
~Regularly \$475~

New Patients Only \* Offer good only for  
patients without insurance. \* With this coupon.

Cannot combine with other offers.

Expires 12/31/25





(Continued from page 13)

**GARDEN NEWS:** The Garden is getting a new shed! The original shed was built as an eagle project at the inception of the Garden and has been in need of much repair. It has served its purpose for over 10 years, and the Garden committee is grateful for all the Eagle Scouts have done for the Garden. The new shed will be an 8'x 8' gray Tuf Shed with a metal framed floor and shingled roof on a 4 in. concrete foundation to ensure it will be secure for many years to come.



At this time there is a waiting list for garden plots, however if you or your family are interested in being placed on the waiting list, please contact the Garden at [garden@bulverdetx.gov](mailto:garden@bulverdetx.gov).

**FREE** Medicare Plan Comparison

Annual Enrollment Period:  
10/15-12/7



**SELECT SILVA**  
AGENCY

949-836-2658  
[www.SelectSilva.com](http://www.SelectSilva.com)  
5525 Blanco Rd. #103  
San Antonio, TX 78216



## B/SB Area Chamber of Commerce Events Calendar



**MAY 2, 2025**

### BINGO IN BULVERDE

Presented by PWR Strategies

1st Friday of every month

Doors open at 5:00 pm with Early Bird

Starting at 5:30 pm

Regular games start at 6:30 pm

Sponsored by: Warriors Remembrance Foundation, Inc

Held at the Bulverde Community Center

1747 Ammann Rd, Bulverde, TX 78163

**MAY 14, 2025**

### COFFEE WITH THE CHAMBER

Presented by: S.T.A.G.E. Inc

7:30 am-9:00 am

Sponsor: Sproull Technologies, LLC

Bulverde Visitor & Event Center

**MAY 16, 2025**

### VETERAN'S NETWORKING BREAKFAST

Presented by: Noah's Ark Self Storage

7:30 am-9:00 am

Sponsored by: Hermie the Loan Hunter

Location-Ay Chiwawa! Mexican Café

(All Veterans are Welcome)

**MAY 21, 2025**

### BSB CHAMBER FOUNDATION POWER LUNCH

Presented by: PWR Strategies

11:30 am-1:00 pm

Sponsors: BSB Economic Development Foundation

and Hermie the Loan Hunter

Bulverde Visitor & Event Center

**MAY 22, 2025**

### BUSINESS NETWORKING MIXER

5:30 pm-7:30 pm

Hosted by: Meant to Soar Foundation

(Member Only Event)

For information on the above events or other community events, please check out our website at [www.bsbchamber.com](http://www.bsbchamber.com) or Follow us on Facebook @BSBChamber





# Ribbon Cutting



**Twine by Daisies and Vines  
Ground Breaking on Future Location**



**Desert Spoon at Spring Creek Gardens  
Grand Opening and Ribbon Cutting**



**Arrow Minded Outdoors Grand Opening & Ribbon  
Cutting for New Walk Through Course**



**Fischer Neighborhood Market-Hwy 281&FM 306  
Grand Opening & Ribbon Cutting**



**Sproull Technologies LLC  
Ribbon Cutting**

License #B5767

Insured/Bonded

**FEDERAL  
SECURITY SYSTEMS**  
(210) 490-2815

Residential & Commercial Security Systems at Affordable Prices  
Installation, Maintenance, 24/7 Security Monitoring  
[www.federalsecuritysystemstexas.com](http://www.federalsecuritysystemstexas.com)

**State Farm®**

*Serving Bulverde / Spring Branch Since 2006*



**Kathleen Banse**

State Farm Insurance Agent  
[Kathleen@KathleenBanse.com](mailto:Kathleen@KathleenBanse.com)

**830-438-7025**



# THE FRONT PORCH News

Bulverde City Hall  
30360 Cougar Bend  
Bulverde, Texas 78163



Time Dated

\*\*\*\*\*ECRWSEDDM\*\*\*\*

Local Postal Customer

PRSRT STD  
US POSTAGE  
PAID  
SAN ANTONIO, TX  
PERMIT NO. 1568

## Pet Galaxy



Full Service Pet Resort & Spa

(830) 885-5335 | Email: [Info@petgalaxyusa.com](mailto:Info@petgalaxyusa.com)  
13060 US-281 N, Spring Branch, TX 78070

Lodging  
Daycare  
Grooming  
Training  
Transport

LOCATED ON  
6 ACRES FOR  
YOUR PET TO  
ENJOY!



Stop by and take a free tour during business hours!

Website: [petgalaxyusa.com](http://petgalaxyusa.com) | Facebook: [www.facebook.com/PetGalaxyUSA](https://www.facebook.com/PetGalaxyUSA)